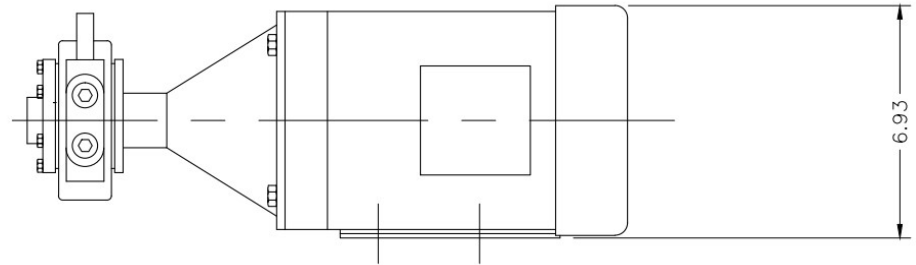

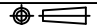


PUMP, 1GPM CIRCULATION
 W/VITON MECH SEAL
 PRESSURE RELIEF VALVE SET AT 60PSI (4.1 BAR)
 W/BRACKET AND COUPLING
 1/2 HP MOTOR, FOOT MOUNTED
 190/380, 230/460, 50/60 TEFC
 CW ROTATION



REVISIONS	STANDARD TOLERANCES UNLESS OTHERWISE SPECIFIED		DIMENSIONS INCH [MM]		 Sussex, Wisconsin (262) 691-0400
	DECIMAL DIMENSIONS:		CHECKED BY	PROJECT ENG.	
	ONE PLACE	±.10" ±2.5mm	SF	-	PUMP, 1GPM CIRCULATION
	TWO PLACE	±.02" ±0.5 mm	DRAWN BY	DATE	
THREE PLACE	±.004" ±0.10 mm	SJA	01/15/24	SCALE:	DWG NO.
ANGLE	±1/2" ±12'	REFERENCE NO.	-	1 : 1	H140-1027
CONFIDENTIAL THIS DRAWING AND THE INFORMATION CONTAINED HEREIN ARE CONFIDENTIAL AND THE EXCLUSIVE PROPERTY OF GENCOAT INC. REPRODUCTION/COPYING OR DISCLOSURE OF THIS DRAWING TO OTHERS WITHOUT GENCOAT'S WRITTEN PERMISSION IS PROHIBITED. THIS DRAWING, AND ANY COPIES THEREOF, SHALL IMMEDIATELY BE RETURNED TO GENCOAT UPON REQUEST BY GENCOAT. IN FURNISHING THIS DRAWING, GENCOAT GRANTS NO RIGHTS OR LICENSES NOR MAKES ANY REPRESENTATIONS OR WARRANTIES REGARDING THIS DRAWING OR THE ACCOMPANYING INFORMATION. THE CONTENTS OF THESE DRAWINGS MAY BE PROTECTED BY UNITED STATES AND/OR FOREIGN COPYRIGHTS OR PATENTS.		ORIG. WORK ORDER NO.	-	 3RD ANGLE PROJECTION	

REV	DESCRIPTION	DATE	APPROVED